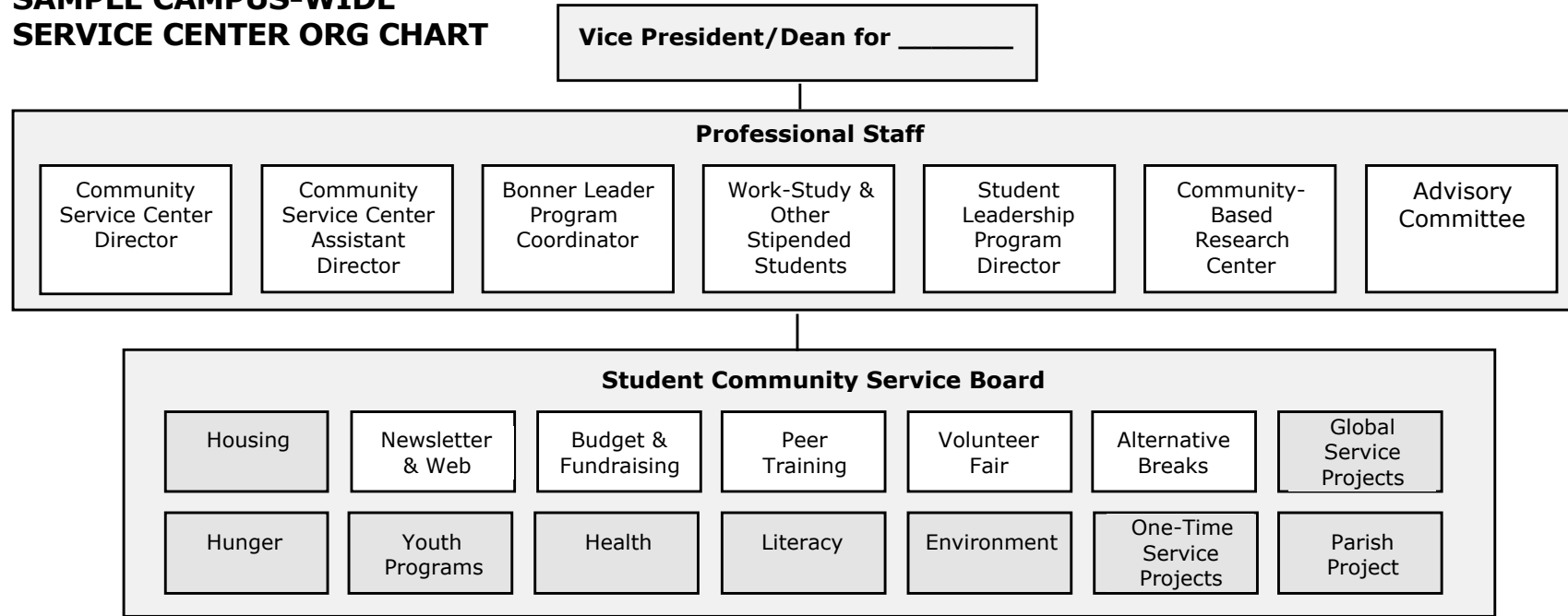


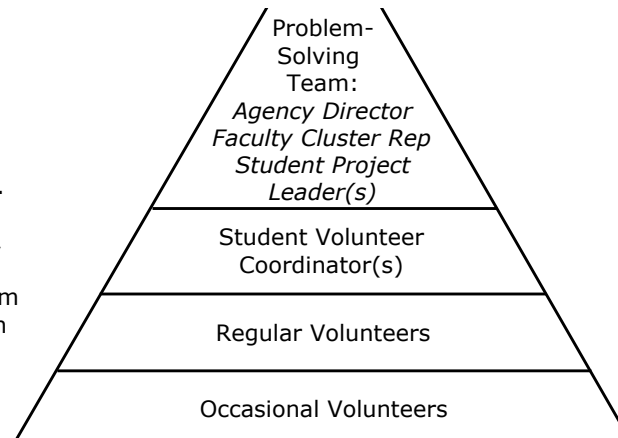
SAMPLE CAMPUS-WIDE SERVICE CENTER ORG CHART



NOTES:

- Students will be recruited through established programs curricular and co-curricular programs, clubs & volunteer fairs
- Placement process for students will have two levels: *Basic* for unaffiliated student volunteers and *Advanced* for students affiliated with an established program
- Advanced placement process includes formal job descriptions, community learning agreement, portfolio assessment & feedback.
- Problem-Solving Teams will (a) manage both basic & advanced placement processes, (b) lead problem-solving process (participatory research & planning for program improvement), and (c) coordinate efforts with other teams.

**Issue Cluster Example:
AMERICA READS INITIATIVE**



- Community Service Director & staff will (a) support Student Community Service Board, (b) organize training workshops, (c) facilitate communication and coordination among programs, committees, and professional staff.
- Service Leadership Review Team could be merged into Advisory Committees for all established programs, with sub-committees concentrating on specific activities
- Community-Based Research & Learning Initiative could support community-faculty partnerships with training and other resources
- Faculty not involved in issue clusters would (a) still provide support through community-based research and planning and (b) be involved in the advising and portfolio process for all students engaged in service